

# Collaborative eLearning with BluES'n

## PRIME Application Prototype v3

Benjamin Kellermann

TU Dresden

July 21, 2008



- 1 What is BluES?
- 2 BluES goes PRIME → BluES'n
- 3 PRIME Concepts used in BluES'n
- 4 Experiences about PRIME integration









## Partial Identity (pID)

Subset of a person's attributes representing the person in a specific situation/context

## Pseudonym

Identifier for a partial identity

## Alias

User-friendly text-based representation of pseudonyms

Create New Partial Identity

Determine Attributes of your new Partial Identifier

Alias\*  
math

Nickname

Prenome  
John

Birthdate  
1970-01-01

Familyname  
Primeur

Profession

Nationality

Language

Email  
john@prime-project.eu

Interests

\*required fields

create Cancel

## Partial Identity (pID)

Subset of a person's attributes representing the person in a specific situation/context

## Pseudonym

Identifier for a partial identity

## Alias

User-friendly text-based representation of pseudonyms

Create New Partial Identity

Determine Attributes of your new Partial Identifier

Alias\*  
math

Nickname

Prenome  
John

Birthdate  
1970-01-01

Familyname  
Primeur

urn:uuid:af694bf2-bcf1-4e81

Nationality

Language

Email  
john@prime-project.eu

Interests

\*required fields

create Cancel

## Partial Identity (pID)

Subset of a person's attributes representing the person in a specific situation/context

## Pseudonym

Identifier for a partial identity

## Alias

User-friendly text-based representation of pseudonyms

Create New Partial Identity

Determine Attributes of your new Partial Idet

Alias\*

math

Nickname

Prenome

John

Alias\*

math

Language

Email

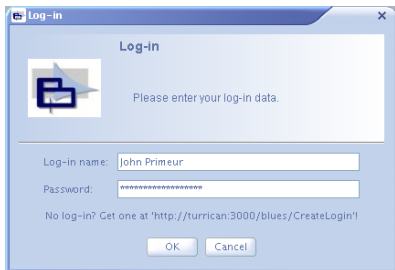
john@prime-project.eu

Interests

\*required fields

create Cancel





A screenshot of a Windows-style log-in dialog box titled "Log-in". The dialog has a blue header bar with a close button (X) in the top right corner. Below the header, there is a light blue area containing a small icon of a blue folder with a white arrow pointing into it. To the right of the icon, the text "Please enter your log-in data." is displayed. Below this, there are two input fields: "Log-in name:" with the text "John Primeur" and "Password:" with a masked password "\*\*\*\*\*". At the bottom of the dialog, there is a link that says "No log-in? Get one at 'http://turrigan:3000/blues/CreateLogin!'". At the very bottom, there are two buttons: "OK" and "Cancel".

Log-in

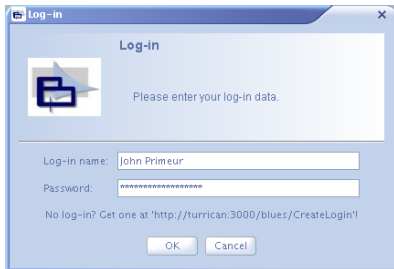
Please enter your log-in data.

Log-in name: John Primeur

Password: \*\*\*\*\*

No log-in? Get one at 'http://turrigan:3000/blues/CreateLogin!'

OK Cancel



Alice

Fix chat 'Global chat' Chat topics in this wo... Global chat ▼

#	message	user	timestamp
...	Anybody there?	Alice	Jul 17, 2008

...

...

Send

Bob

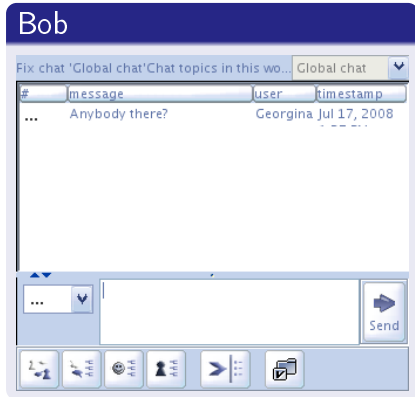
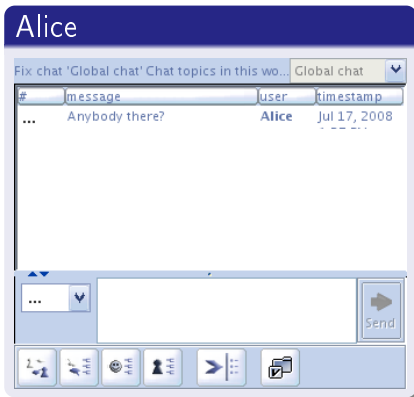
Fix chat 'Global chat' Chat topics in this wo... Global chat ▼

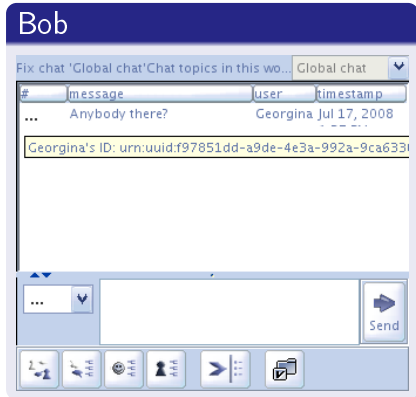
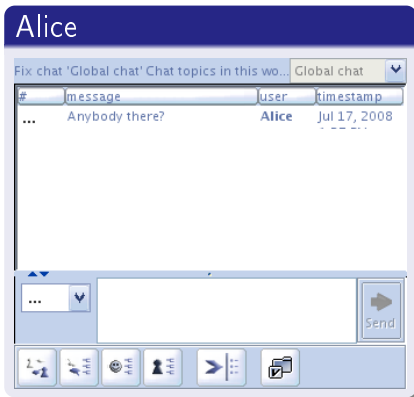
#	message	user	timestamp
---	---------	------	-----------

...

...

Send





Alice

Fix chat 'Global chat' Chat topics in this wo... Global chat

#	message	user	timestamp
...	Anybody there?	Alice	Jul 17, 2008

...

Bob

Fix chat 'Global chat' Chat topics in this wo... Global chat

#	message	user	timestamp
...	Anybody there?	Georgina	Jul 17, 2008

...

Alice

Fix chat 'Global chat' Chat topics in this wo... Global chat

#	message	user	timestamp
...	Anybody there?	Alice	Jul 17, 2008

...

Bob

Fix chat 'Global chat' Chat topics in this wo... Global chat

#	message	user	timestamp
...	Anybody there?	Georgina	Jul 17, 2008
...	Hi Georgina	Bob	Jul 17, 2008

...

**Alice**

Fix chat 'Global chat' Chat topics in this wo... Global chat ▼

#	message	user	timestamp
...	Anybody there?	Alice	Jul 17, 2008
...	Hi @Alice@	Jill	Jul 17, 2008

urn:uuid:  
f97851dd  
a9de-4e3a  
992a-9ca633

... ▼

Send

Icons: [Microphone] [Speaker] [Smiley] [Person] [Next] [Checkmark]



**Bob**

Fix chat 'Global chat' Chat topics in this wo... Global chat ▼

#	message	user	timestamp
...	Anybody there?	Georgina	Jul 17, 2008
...	Hi @Georgina@	Bob	Jul 17, 2008

... ▼

Send

Icons: [Microphone] [Speaker] [Smiley] [Person] [Next] [Checkmark]



Send Personal Data

Send Personal Data?

You have initiated an action that requires delivery of data to the server (more information)

**Requested Data**

**Pseudonym**  
Unique identifier of a partial identity

**What caused the Request?**

You are going to subscribe to a messaging channel in the workspace. This action is caused for awareness purposes by activation of a channel. The pseudonym is used to denote the subscribers of a channel and is not visible when unsubscribing from the channel.

**Which informations becomes visible for other users?**  
Your pseudonym will be contained in the list of channel subscribers.

**Select Partial Identity**

According to predefined rules, the Decision Suggesting Module (DSM) suggests partial identities to assist you in this task. The scale on the left hand side of the Channel Suggestion dialog is highlighted. You should select a partial identity with five or four bars. Hint: You can also apply suggestions automatically by defining conditions in the Channel Suggestion dialog, this feature will not appear.

**New partial Identity**

**Explanation**  
You should use the partial identity highlighted in this list in this situation. Of course, you can also select another partial identity or create a new one

**Existing partial Identities**

Partial Identity	Attributes
teacher	Attributes
math	Attributes
art	Attributes

Send Data

Configuration of the Decision Suggesting Modul (DSM)

>> Select Workspace to configure <<

All Workspaces

Mode

☐ Normal
 ☒ Expert

Level of Partitioning

Recognition (\*)

Functional Roles (\*)

Choose one level of data partitioning

☐ BlueES'n
 ☒ Workspace
 ☐ Functional Modules

Level of data partitioning: workspace

Use partial identities within one workspace only.

☒ Suggest particular partial identity for my first action in an application session within a workspace:

☐ prefer partial identity used for last action within workspace

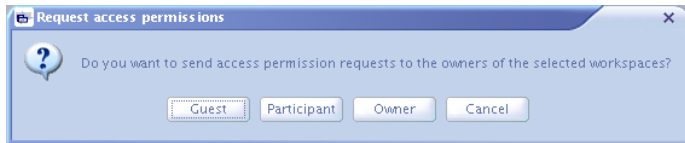
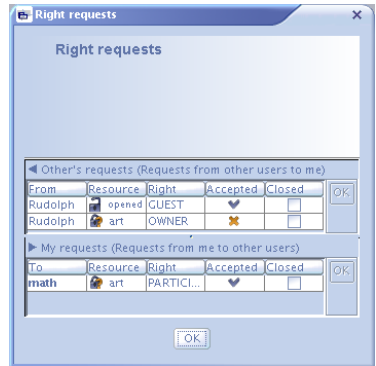
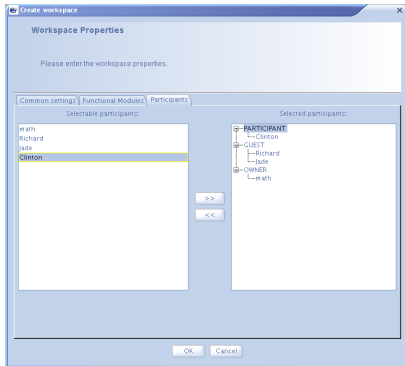
☒ select automatically

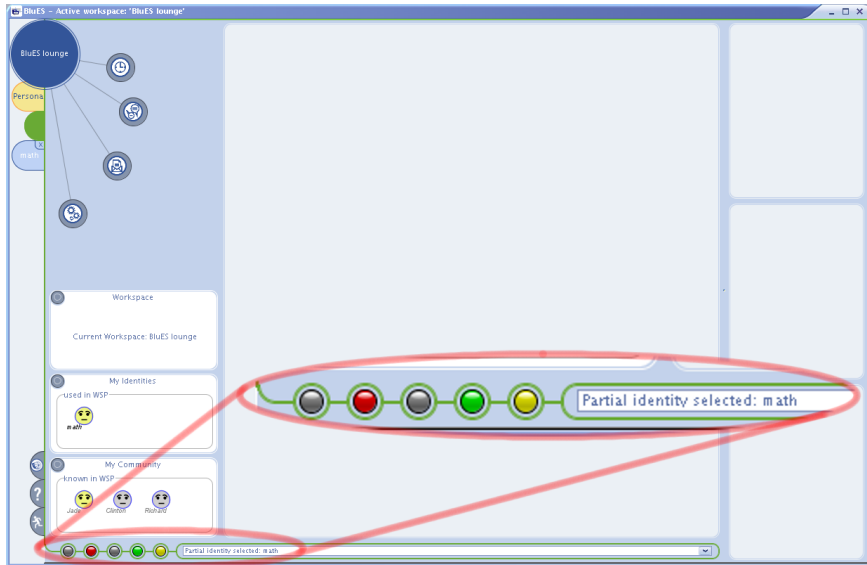
☒ generate new partial identity

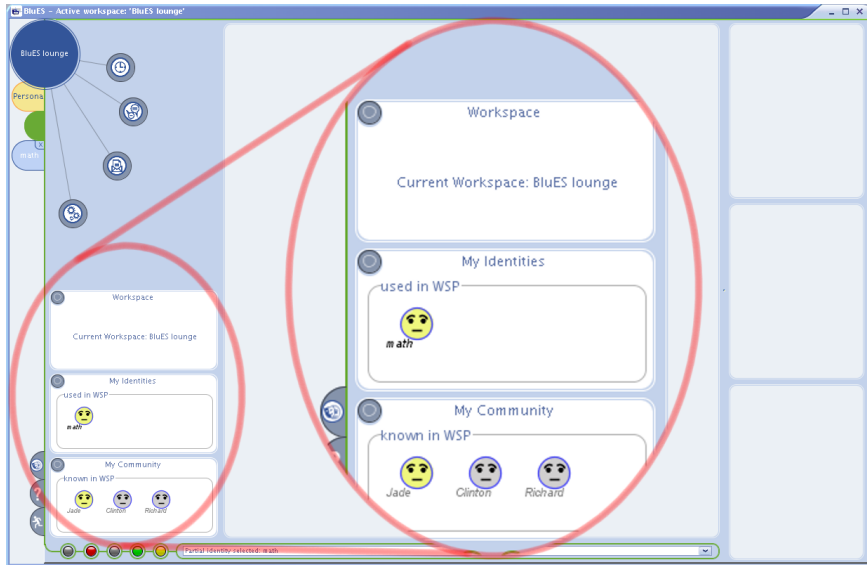
☒ generate automatically

For the following actions within an application session:

☐ use partial identity selected for last action within this workspace automatically







## PRIME

- very much focused on customer-service scenarios
  - Send Personal Data Dialogue
  - credentials cannot be revoked
  - client-server architecture
  - few transactions
- performance (synchronous interaction is needed in collaboration)
- conflict: privacy vs. usability
  - more difficult than in customer-service scenarios because of many transactions
  - good default configuration of Decision Suggestion Module is not easy

# Thank you for your attention!

---